

THE
MEGALEIO
TRICKS











Other Details

1. High Street Retail
2. Designed By: Aedas Architects
3. Low Maintenance
4. Location: Sec-129, Noida Expressway
5. Expected Loading: 38%
6. Expected Ceiling Height:
 - a. Ground Floor: 4.5 Mtrs.
 - b. 1st & 2nd Floor: 4 Mtrs.

Floor Plan

Floor	Area	Size in Sq. ft.
Basement 2	Covered Car Parking	
Basement 1	Hyper Store + Car Parking	
Ground Floor	Entrance Lobby + Retail Shops + Café + Anchor Store + Double height shops	400 to 700 approx
1 st Floor	Shops + Anchor Store	250 to 650 approx
2 nd & 3 rd Floor	5 Screen PVR Multiplex + Food Court + F&B + Entertainment Area	
4 th Floor	Banquet Hall	
6 th to 12 th	Office Area	560,600,680, 1200, 2400 approx
13 th to 19 th	Service Apartments	480, 510, 550 approx
21 st to 32 nd	Hotel Holiday Inn	
33 rd to 34 th	Club Area	

Description of Floors



BASEMENT LEVEL -1 -INDIVIDUAL RETAIL AREA, AJNARA		
S.NO.	SHOP NO.	SALE AREA (Sqft.)
1	HYPER	38502.545

BASEMENT-01 FLOOR PLAN

AJNARA COMMERCIAL

MIXED USED DEVELOPMENT
FOR ADONIS BUILDTECH,
NOIDA, (U.P.)



GROUND FLOOR INDIVIDUAL RETAIL AREA, APARNA

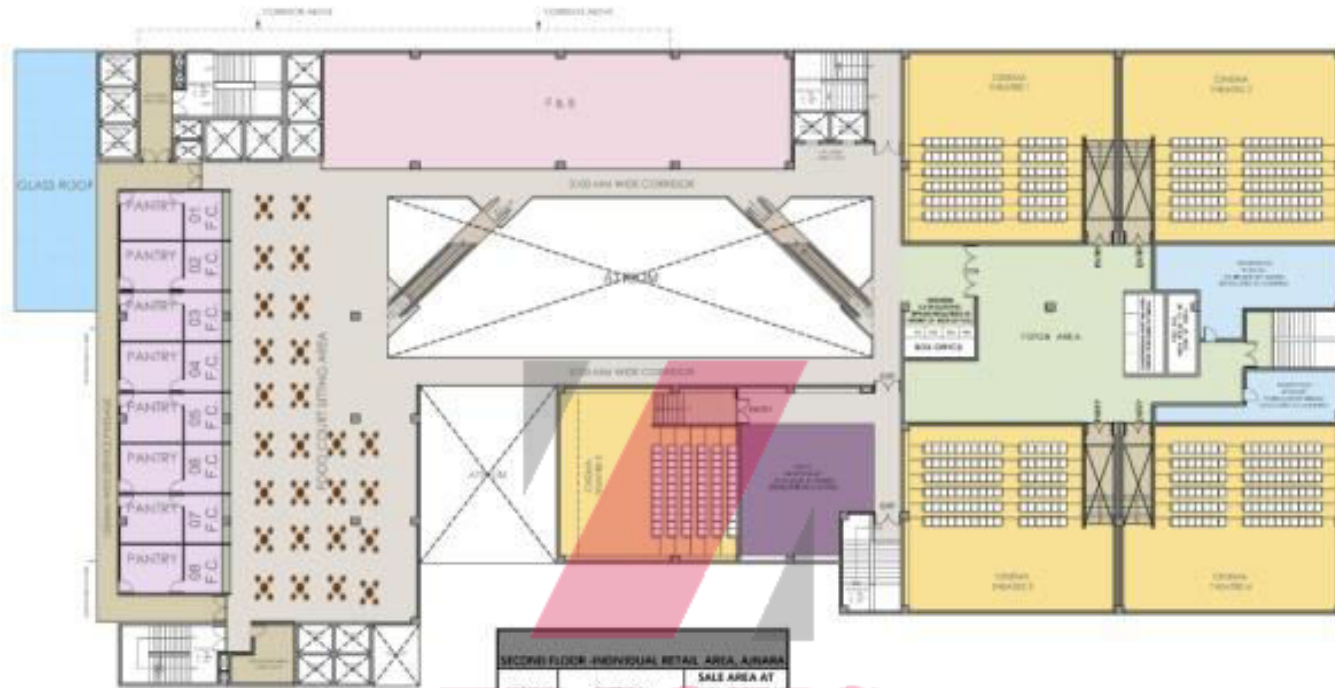
S.NO.	SHOP NO.	SALE AREA AT GROUND FLOOR (Sq.Ft.)
1	GF-SU-01	625.586
2	GF-SU-02	567.579
3	GF-SU-03	567.579
4	GF-SU-04	567.579
5	GF-SU-05	459.127
6	GF-SU-06	459.127
7	GF-SU-07	858.127
8	GF-SU-08	706.209
9	GF-SU-09	898.621
10	GF-SU-10	476.084
11	GF-SU-11	481.925
12	GF-SU-12	499.450
13	GF-SU-13	499.450
14	GF-SU-14	526.975
15	GF-SU-15	408.582
16	GF-SU-16	412.506
17	GF-SU-17	516.975
18	GF-SU-18	499.450
19	GF-SU-19	499.450
20	GF-SU-20	481.925
21	GF-SU-21	458.402
22	GF-SU-22	782.568
23	GF-SU-23	745.077
24	GF-SU-24	745.077
25	GF-SU-25	745.077
26	GF-SU-26	745.077
27	GF-SU-27	734.061
28	GF-SU-28	528.775
29	GF-SU-29	511.657
TOTAL		17827.118

S.NO.	SHOP NO.	LEARN AREA AT GROUND FLOOR (Sq.Ft.)
1	GF-AC-01	917.81948
2	CAFE-01	2149.84380
3	CAFE-02	2082.183613
4	CAFE-03	2143.877051
5	RETAIL-VL-01	2038.82122
6	RETAIL-VL-02	5147.712889
7	RETAIL-VL-03	4335.879451
TOTAL		17828.916

GROUND FLOOR PLAN

AJNARA COMMERCIAL

MIXED USED DEVELOPMENT FOR ADONIS BUILDTECH, NOIDA, (U.P.)



SECOND FLOOR - INDIVIDUAL RETAIL AREA, AJNARA

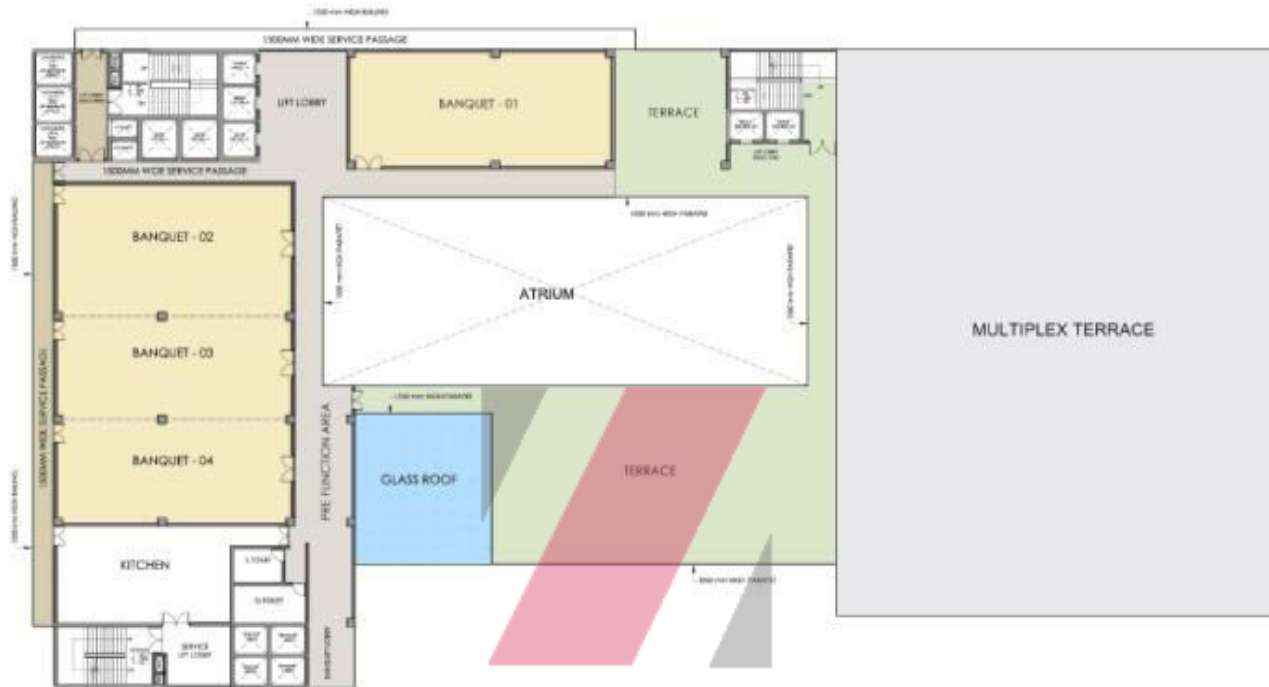
S.NO.	SHOP NO.	SALE AREA AT SECOND FLOOR (Sqft.)
1	FOOD COUNTER-01	419.47308
2	FOOD COUNTER-02	419.47308
3	FOOD COUNTER-03	419.47308
4	FOOD COUNTER-04	419.47308
5	FOOD COUNTER-05	419.47308
6	FOOD COUNTER-06	419.47308
7	FOOD COUNTER-07	419.47308
8	FOOD COUNTER-08	419.47308
9	FOOD COURT	5964.5124
10	F & B	4295.27766
TOTAL		13533.899

ZEPHYS.COM

SECOND FLOOR PLAN

AJNARA COMMERCIAL

MIXED USED DEVELOPMENT FOR ADONIS BUILDTECH, NOIDA, (U.P.)



**FOURTH FLOOR - INDIVIDUAL RETAIL AREA,
AJNARA**

S.NO.	SHOP NO.	(Sqft.)
1	BANQUET FLOOR PLATE	19389.850
TOTAL		19389.850

FOURTH FLOOR PLAN

AJNARA COMMERCIAL

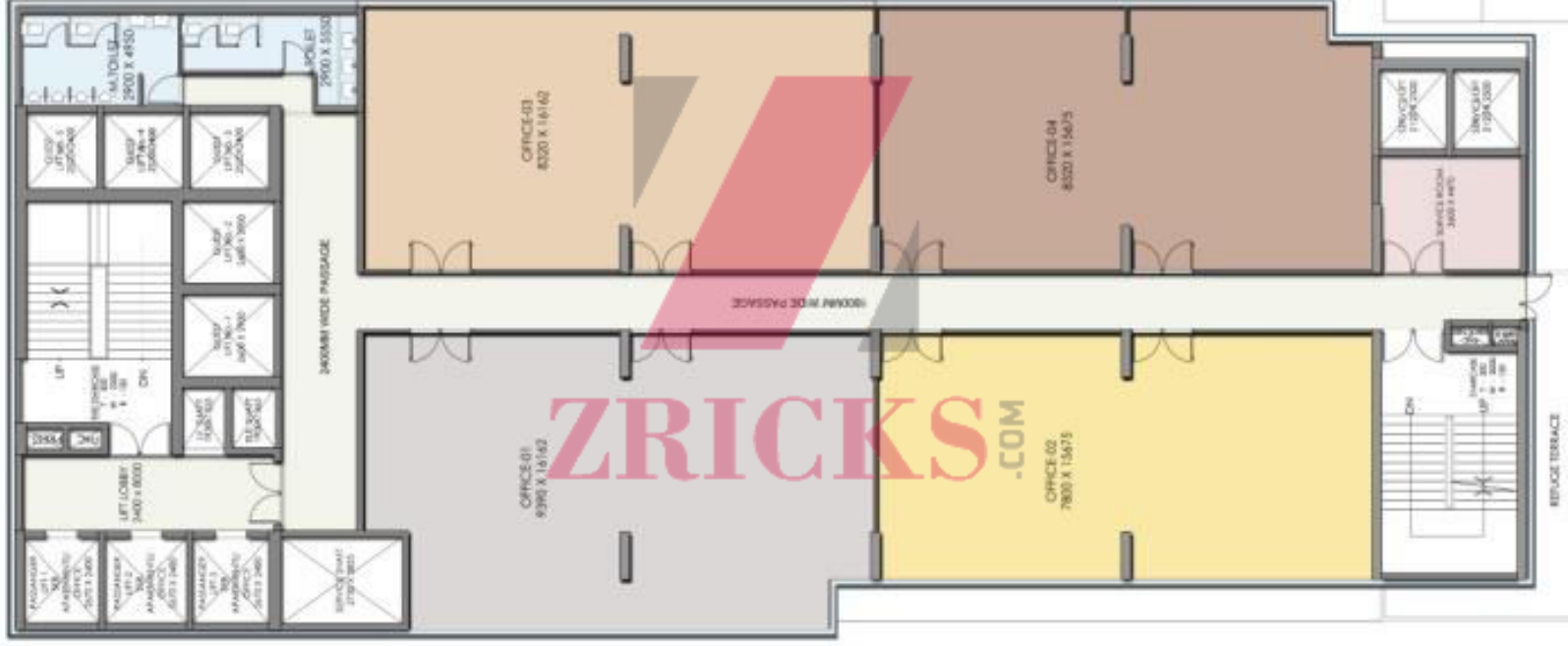
MIXED USED DEVELOPMENT
FOR ADONIS BUILDTECH,
NOIDA, (U.P.)



6TH TO 9 TH OFFICE FLOOR (WITH - 03 OFFICE)		
S.NO.	OFFICE NO	SALE AREA Sqft.
1	OF-01	2673.685
2	OF-02	5173.324
3	OF-03	2481.364
TOTAL		10328.373

**AJNARA
COMMERCIAL**

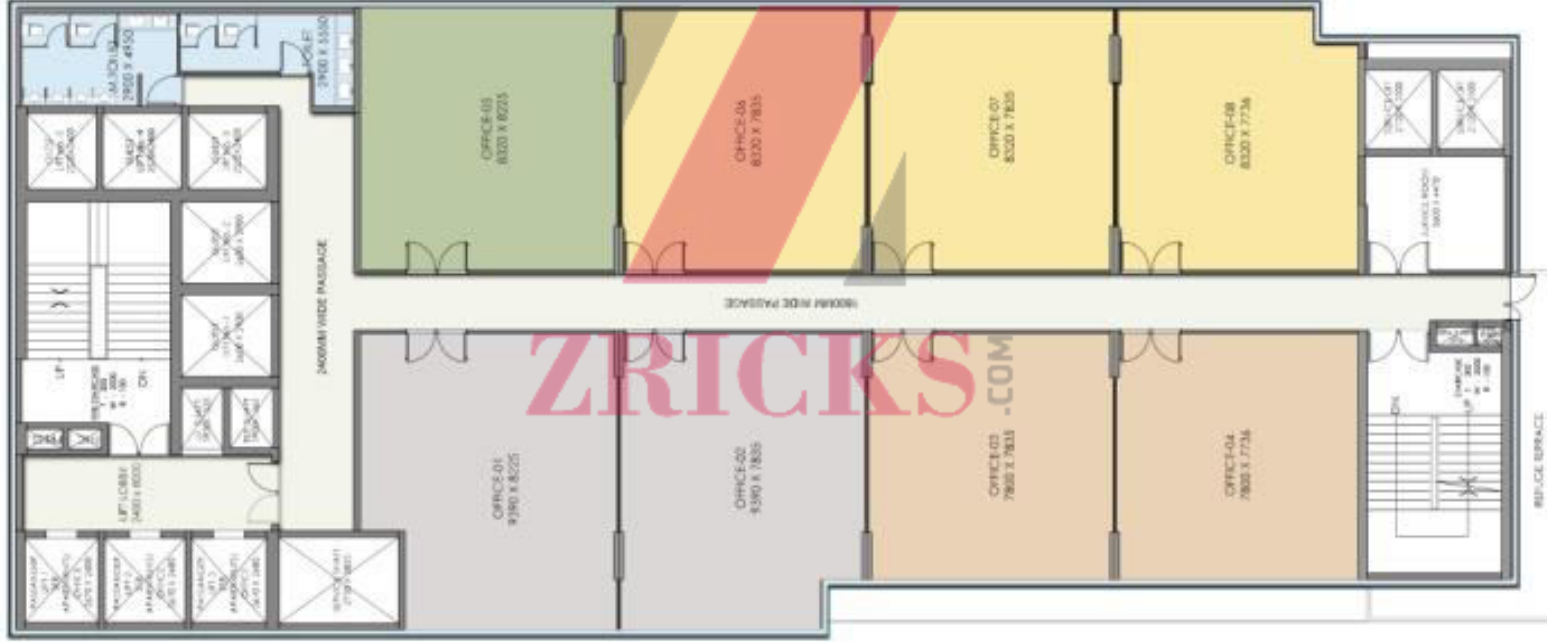
TYPICAL
OFFICE FLOOR PLAN
(06 TO 09 FLOOR)
WITH 03 OFFICE



6TH TO 9 TH OFFICE FLOOR WITH(OPTION-4)			
S.NO.	OFFICE NO	SALE AREA	
		(Sqft.)	
1	OF-01	2672.848	
2	OF-02	2277.065	
3	OF-03	2481.364	
4	OF-04	2381.374	
TOTAL		9815.650	

**AJNARA
COMMERCIAL**

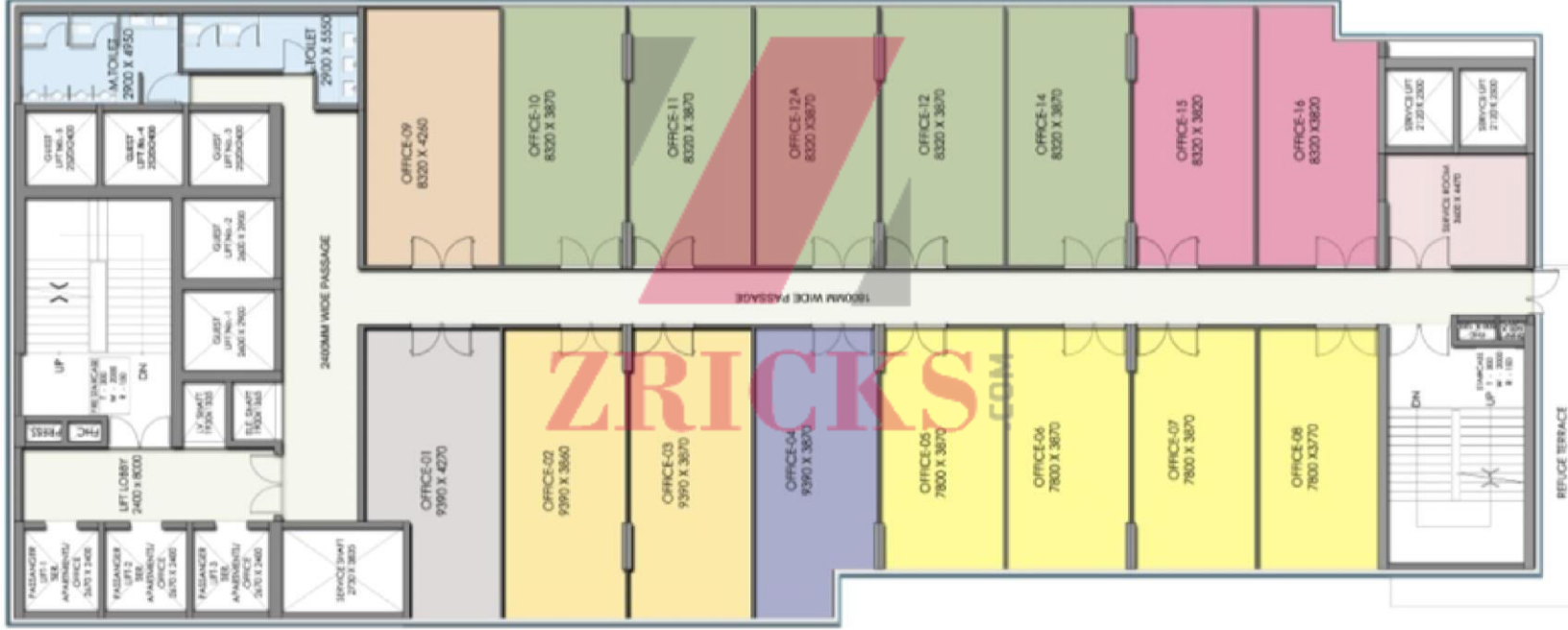
TYPICAL
OFFICE FLOOR PLAN
(06 TO 09 FLOOR)
WITH 04 OFFICE



6TH TO 9 TH OFFICE FLOOR WITH(OPTION-B)		
S.NO.	OFFICE NO	SALE AREA (Sqft.)
1	OF-01	1354.925
2	OF-02	1313.772
3	OF-03	1127.765
4	OF-04	1149.073
5	OF-05	1281.495
6	OF-06	1199.869
7	OF-07	1199.869
8	OF-08	1184.454
TOTAL		9811.223

AJNARA COMMERCIAL

TYPICAL OFFICE FLOOR PLAN (06 TO 09 FLOOR) WITH 08 OFFICE



6TH TO 9 TH FLOOR WITH (OPTION-16)			
S.NO.	OFFICE NO	SALE AREA (Sqft.)	SALE AREA (Sqft.)
2	OF-02	673.094	
3	OF-03	673.094	
4	OF-04	640.660	
5	OF-05	563.935	
6	OF-06	563.935	
7	OF-07	563.935	
8	OF-08	585.278	
9	OF-09	681.569	
10	OF-10	599.926	
11	OF-11	599.926	
12	OF-12	599.926	
13	OF-12A	599.926	
14	OF-14	599.926	
15	OF-15	592.375	
16	OF-16	592.096	
TOTAL			9816.211

**AJNARA
COMMERCIAL**

TYPICAL
OFFICE FLOOR PLAN
(06 TO 09 FLOOR)
WITH 16 OFFICE



FLOOR PLATE AREA CALCULATION OF SERVICE APARTMENT FLOOR, AJNARA (10 to 19 SA FLOOR)

ROOMS NO.S	SALE AREAS
1	541.806
2	511.186
3	511.186
4	511.186
5	511.186
6	511.186
7	511.186
8	511.186
9	488.272
10	478.490
11	478.490
12	478.490
12A	478.490
14	535.389
15	545.660
16	545.660
17	545.660
TOTAL	8694.706

AJNARA COMMERCIAL

TYPICAL
SERVICE APARTMENT FLOOR

Specifications' of Service Apartment

- Double Bed with Mattress, Pillow's & Bed Sheet
- Split Air Conditioner
- LCD Television
- Fridge
- Sofa Set
- RO unit in Kitchen
- Microwave Oven
- Electric kettle
- Crockery (Set of Four)
- Toaster
- Cupboards
- Curtains
- Towel Racks in Bathroom
- Semi Modular Kitchen with Hob & Chimney
- Bathroom & Kitchen fittings.



ONGOING RESIDENTIAL PROJECTS



NEARING POSSESSION



POSSESSION ON



ONGOING COMMERCIAL PROJECTS

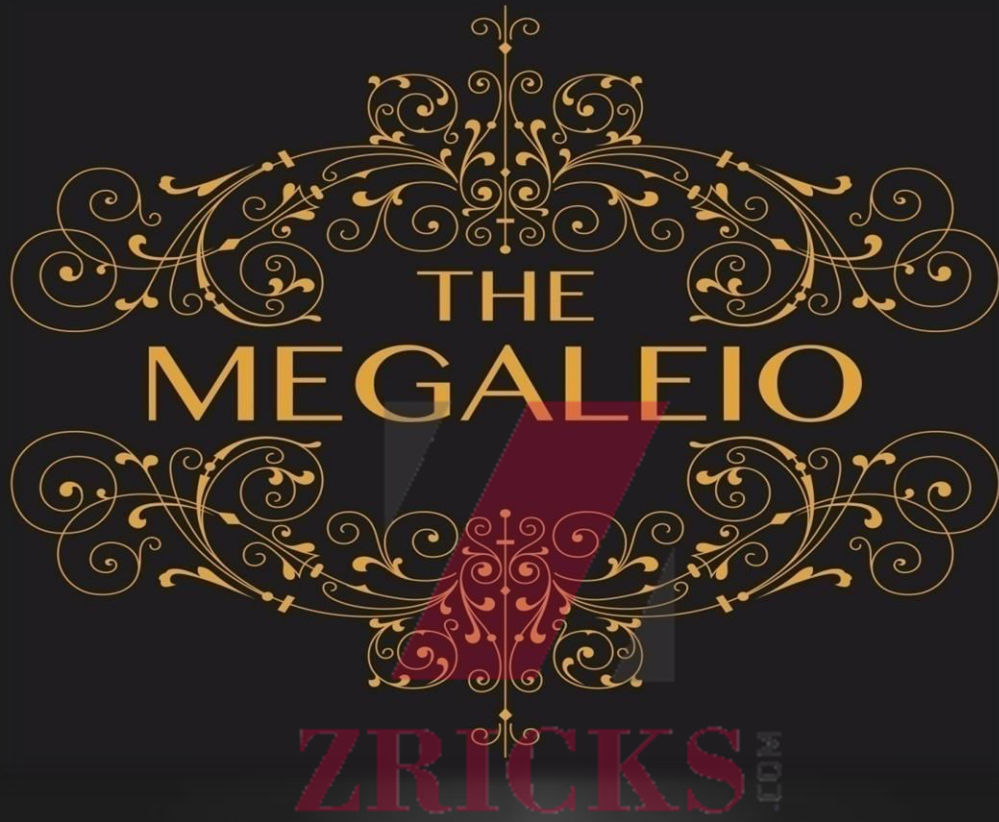


DELIVERED PROJECTS



UPCOMING PROJECTS





THE
MEGALEIO

ZRICKS

Thank You